

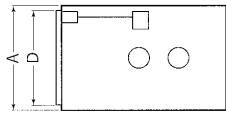
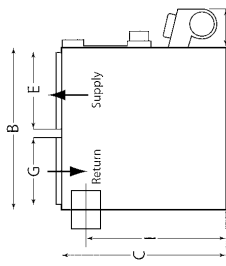
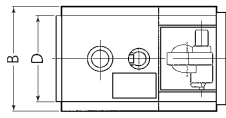
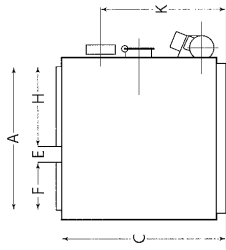
# SPECIFICATIONS

Model	Type of Unit	Input US GPH	Output BTU/HR	Nozzle	Beckett Oil Burner	Aero Oil Burner	Riello Oil Burner	60°W Nozzle	Blower Belt	Blower Direct	.2 WC Direct	.5 WC Direct	Motor	CFM Range at .2 & .5 SP	Air Filter Size
PK 98	Low-boy	.75	86,000	80°W	AF90XN	FAFC-2X	40-F3	.65	A10-10	N/A	3 1/2 x 7	N/A	1/3 HP	950-1300	① 20"x25"x1"
	Front Breech	.85	98,000	80°W	AF90XN	FAFC-2X	40-F3	.75	A10-10	N/A	3 1/2 x 7	N/A	1/3 HP	950-1300	① 20"x25"x1"
PK 140	Low-boy	1.00	118,000	80°W	AF90XN	FAFC-2	40-F5	.85	A10-10	N/A	3 1/2 x 6	N/A	1/2 HP	960-1400	② 16"x25"x1"
	Front Breech	1.20	136,000	80°W	AF90XN	FAFC-2	40-F5	1.00	A10-10	N/A	3 1/2 x 6	N/A	1/2 HP	960-1400	② 16"x25"x1"
M 101	Low-boy	.65	78,000	80°W	AF35YHHS	FAFC-2	40-F3	.60	G-10	G-10DD	4-Speed	4-Speed	1/2 HP	840 to 815	② 16"x24"x1"
	Rear Breech	.75	90,000	80°W	AF35YHHS	FAFC-2	40-F3	.65	G-10	G-10DD	4-Speed	4-Speed	1/2 HP	840 to 815	② 16"x24"x1"
	Multi-fired	.85	101,000	80°W	AF35YHHS	FAFC-2	40-F3 or F5	.75	G-10	G-10DD	4-Speed	4-Speed	1/2 HP	840 to 815	② 16"x24"x1"
M 141	Low-boy	1.00	118,000	80°W	AF35YY	FAFC-3	40-F5	.85	G-10	G-10DD	4-Speed	4-Speed	1/2 HP	960 to 960	② 16"x24"x1"
	Rear Breech	1.10	130,000	80°W	AF35YY	N/A	N/A	N/A	G-10	G-10DD	4-Speed	4-Speed	1/2 HP	960 to 960	② 16"x24"x1"
	Multi-fired	1.20	141,000	80°W	AF35YY	N/A	40-F5	1.00	G-10	G-10DD	4-Speed	4-Speed	1/2 HP	1400 to 1600	② 16"x24"x1"

Both the PK and M model furnaces are approved for use with L-vent pipe and Tjernland SSC "Sideshot" vent.

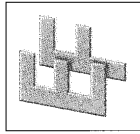
The M series only is available with direct drive blower. All models operate with flue draft of -.02" WC.

**Burners**  
Units are CSA Certified for use with all of these Flame Retention Head Burners:  
B = Beckett  
A = Aero  
R = Riello



Model	A	B	C	D	E	F	H	K	Smoke Pipe	Weight
PK 98	43 7/8"	27 1/4"	42"	25 1/4"	3 1/2"	14"	22 1/4"	32"	7"	280 lbs.
	111 cm	69 cm	106 cm	65 cm	8 cm	36 cm	56 cm	81 cm	17 cm	127 kg
PK 140	43 7/8"	27 1/4"	49 7/8"	25 1/4"	3 1/2"	14"	22 1/4"	35"	8"	360 lbs.
	111 cm	69 cm	126 cm	65 cm	8 cm	36 cm	56 cm	89 cm	20 cm	163 kg

Model	A	B	C	D	E	G	Smoke Pipe	I	Weight
M Series	23 3/4"	47"	43"	22 1/4"	22"	20"	7"	38"	280 lbs.
	60 cm	119 cm	109 cm	57 cm	56 cm	51 cm	18 cm	97 cm	127 kg



## ENTERPRISE-FAWCETT

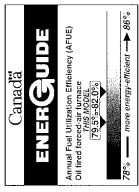
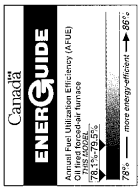
73 Lorne Street  
Sackville, NB E4L 4A2  
Tel: 506 536-1160  
Fax: 506 536-1820  
Email: [enterprise@nbnet.nb.ca](mailto:enterprise@nbnet.nb.ca)  
[www.enterprise-fawcett.com](http://www.enterprise-fawcett.com)  
Printed in Canada

PK98 / PK 140  
SERIES

M101 / M141  
SERIES



VERIFIED FOR ENERGY PERFORMANCE



We reserve the right to make improvements and design modifications without notice.